

## Quality, service and more...

When you purchase from Ecoffins you can take it as read that you will receive a superbly handcrafted product and outstanding service. But there's more to Ecoffins than just that. Here are some other reasons why we hope that you will be pleased with your choice:



The aim of the **World Fair Trade Organisation (WFTO)** is to fight against poverty, climate change and global economic crises, and their belief is that trade must benefit the most vulnerable and deliver sustainable livelihoods by developing opportunities for disadvantaged producers. Ecoffins has been a member of the WFTO for over 10 years and is the first and only coffin manufacturing company in the world to be granted Fair Trade Status by the WFTO.



**Environmentally friendly:** All Ecoffins products are 100% natural and bio-degradable with no plastic, metals, screws or staples used in their construction. The materials we use are carefully chosen for their sustainability as well as the low impact their cropping has on the surrounding environment. Due to clever packing "Russian Doll" style even our bamboo coffins shipped from China use no more fuel on their voyage from the Far East to the UK than a five mile car journey.



The **National Association of Funeral Directors** is dedicated to maintaining the highest of standards in the funeral business across the UK for over 100 years. Ecoffins have been supplier members of the organisation for over 15 years.



The **Association of Green Funeral Directors** promotes greener and more natural funerals to funeral directors and members of the public. Ecoffins is a Founding Member of the Association.



The **Coffin, Casket & Shroud Association** sets a standard for coffins, caskets and shrouds sold in the UK, in particular those used for cremation. It has helped to bring alternative and innovative goods into the mainstream. Ecoffins is a Founding Member of the Association.



**Confidence** in our products: All our coffins are suitable for cremation or burial and supplied with solid flat bases with finger grips, load bearing handles and are weight tested up to 23 stone. There are no extra costs, as our coffins are delivered fully fitted with cotton liners, headrest and bamboo nameplate, that can be engraved if required.



Tel: 01795 830688



info@ecoffins.co.uk



www.facebook.com/EcoffinsUK



twitter.com/EcoffinsUK

# Willow eco2

Willow is a fast-growing, perennial, highly sustainable and renewable material which can be annually harvested and will immediately begin regrowing without new tilling and planting. Willow's fast regrowth keeps pace with the rate of harvesting, unlike the trees used in traditional coffin manufacturing which are cut down at a faster rate than they can regrow. Available in Round and Traditional shapes.



Stockberry



Kingsted





# Willow eco2 Light

Willow is a fast-growing, perennial, highly sustainable and renewable material which can be annually harvested and will immediately begin regrowing without new tilling and planting. Willow's fast regrowth keeps pace with the rate of harvesting, unlike the trees used in traditional coffin manufacturing which are cut down at a faster rate than they can regrow. Available in Round and Traditional shapes.



*Stockberry Light*



*Kingsted Light*





# Willow Highsted

The Highsted is a traditionally shaped coffin handcrafted from willow using traditional methods. The willow is woven onto a self-supporting frame giving them exceptional strength while remaining incredibly light. Willow is a deciduous tree found primarily on moist soil in cold and temperate regions of the Northern Hemisphere. Willow is a renewable, annually harvested crop and a highly sustainable material for coffins, compared to solid hardwoods from trees which can take thirty to sixty years to reach maturity. Our Willow Highsted coffins are manufactured in the EU using cottage industry methods - in which people work in their own homes and use their own equipment - using European Willow.



Light



Natural



Fern



Freesia



# Willow Cromer

The Cromer is a round ended coffin with gently tapered sides handcrafted from willow using traditional methods. Willow is a deciduous tree found primarily on moist soil in cold and temperate regions of the Northern Hemisphere. Almost all willows take root very readily from cuttings taken from the original crown, or even where broken branches are left lying on the ground. Our Willow Cromer coffins are manufactured in the EU using cottage industry methods - in which people work in their own homes and use their own equipment - using European Willow. Available in either Natural Buff coloured or Light Willow with woven willow handles and toggle lid fasteners.



Natural



Light



Crocus



Peony



# Willow Pod

The Willow Pod is handcrafted from willow using traditional methods and has a unique shape. Following a traditional coffin shaped footprint, the sides of the base taper out slightly and the coffin is topped with a highly sculpted curved lid. Willow is a deciduous tree found primarily on moist soil in cold and temperate regions of the Northern Hemisphere. Willow is a renewable, annually harvested crop and a highly sustainable material for coffins, compared to solid hardwoods from trees which can take thirty to sixty years to reach maturity. Our Willow Pod coffins are manufactured in the EU using cottage industry methods - in which people work in their own homes and use their own equipment - using European Willow.



Natural



Light



Dahlia



Bluebell



# English Willow

Our English Willow coffins are handcrafted by skilled workers with long family histories in willow weaving, using traditional methods. Willow has been grown on the Somerset Levels for centuries and has the unique ability to regenerate repeatedly from the same crown for 30 to 40 years. Once harvested it can grow back to the same height in a year. Our English Willow coffins are available in either Traditional or Round ended styles and in a range of colours. Our standard colours are Light, Brown and Green with the colour variations being achieved naturally by drying, boiling or stripping the bark. A further range of natural dye colours are also available.



Brown



Green



Light



Light



Brown

Green



# English Willow Round

Our English Willow coffins are handcrafted by skilled workers with long family histories in willow weaving, using traditional methods. Willow has been grown on the Somerset Levels for centuries and has the unique ability to regenerate repeatedly from the same crown for 30 to 40 years. Once harvested it can grow back to the same height in a year. Our English Willow coffins are available in either Traditional or Round ended styles and in a range of colours. Our standard colours are Light, Brown and Green with the colour variations being achieved naturally by drying, boiling or stripping the bark. A further range of natural dye colours are also available.



Brown



Green



Light



Light



Brown

Green



# English Willow Rainbow

Our English Willow Rainbow range features all the colours of the rainbow handwoven into their designs. The striking colours are achieved by colouring the willow with only natural dyes before hand weaving them into the coffins. All of our English Willow coffins use willow grown here in the UK on the Somerset levels and are expertly woven by skilled local craftspeople in time honoured tradition. Our Rainbow coffins are a fitting tribute to those that have led a colourful life.



Woodstoke



Glastenberry



Double Rainbow Traditional



Double Rainbow Round



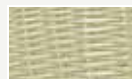


# English Willow Colours

Our English Willow coffins are handcrafted by skilled workers with long family histories in willow weaving, using traditional methods. English Willow has been grown on the Somerset Levels for centuries and has the unique ability to regenerate annually from the same crown for 30 to 40 years. Our English Willow coffins are available in either traditional or round ended styles in a range of colours created with natural dyes. Bespoke designs can also be hand-made to any size, shape or colour variation.



Natural willow



Light willow



White



Yellow



Orange



Red



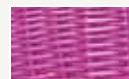
Purple



Light pink



Dark pink



Light blue



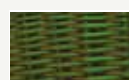
Dark blue



Light green



Dark green



Brown





# Coloured Coffins

Our coffins can be custom sprayed to any colour of your choosing to create a colourful, individual tribute to a loved one. We use only environmentally friendly, advanced water-based paints which provide a smooth, satin finish coat alongside a great range of colours to choose from. We can also create combinations of colours to produce flag colours, football team kit colours, regimental colours, club colours or anything else that could bring a unique and fitting personal touch to a coffin. Some of the most popular colours are featured below.



Vibrant Red



Red



Orange



Yellow



Lime



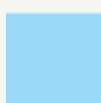
Green



Dark Green



Teal



Light Blue



Cyan



Blue



Dark Blue



Purple



Mauve



Lilac



Fuchsia



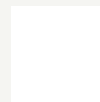
Pink



Light Pink



Grey



White



Black



# Pandanus eco2

Growing abundantly in South East Asia and Australia, Pandanus is a fast growing and highly renewable material. To ensure sustainability only young leaves are cut from the plant so that it naturally regenerates. This hardy, fast growing plant uses less water to grow and does not require pesticides. Cultivation of Pandanus as an alternative material to wood also helps to reduce deforestation which contributes to climate change. Our Pandanus coffins are manufactured in Indonesia in only World Fair Trade Organisation accredited workshops.



*Ringlemere*



*Oatydawn*





# Pandanus

Our Pandanus coffins are made from the leaves of a prolific wild plant which grows rapidly in the watery environments of Southeast Asia and is cultivated as a highly renewable and sustainable material. The leaves are dried and then spun into long yarns which are then woven and coiled around a natural cane framework. Rattan is also woven into the coffins design to create a striking lightweight contrast against the leaf yarn's silvery appearance. Our Pandanus coffins are manufactured in Indonesia in only World Fair Trade Organisation accredited workshops.



Traditional



Round



Allium



Iris

Tulip





# Banana Leaf Eco2

Our Banana coffins are made using the dried woven leaves of the banana, an annual plant, after the plant has produced its fruit and died back each year. Banana leaves are 100% environmentally-friendly and sustainable, as well as biodegrading like any other plant matter, and they're a by-product of banana growing that is continuously produced. Rattan is also woven into our coffin design to create a striking contrast with the woven banana leaves mottled golden appearance. All of our banana products are made in World Fair Trade Organisation accredited workshops.



Bridgemoor



Hazelfield



Primrose



Buttercup



Sunflower





# Caskets

Our Banana Caskets feature a combination of coiled banana leaf, pandanus and coloured rattan, woven around a sturdy cane framework, to create their unique and stunning look. The rattan work on each coffin is dyed to further enhance their individuality, with either Cerise or Ebony colours available. Our Banana Casket are traditional casket shape with a curved lid and sturdy cane pole handles on both sides. These caskets are handwoven in World Fair Trade Organisation accredited workshops.



Banana Casket  
Cerise



Banana Casket  
Ebony





# Bamboo Eco

A beautifully crafted bamboo coffin woven from sustainable split bamboo, manufactured by our company in China. These coffins are handmade and 100% bio-degradable with no nails, screws or glues used in their manufacture. Bamboo is the fastest growing plant on Earth making it a highly renewable material. The species of bamboo used, *Phyllostachys Pubescens*, does not form any part of the Chinese Panda's diet and they do not live in Hunan Province where our company is located, so their production does not in any way affect this endangered species.



Traditional



Round



Laurel



Glade



Aspen



# Bamboo Lattice

The Bamboo Lattice coffin is constructed of two different layers of woven bamboo which gives it a distinctive and unique appearance. A criss-cross pattern of stripped bamboo bark covers an intricately woven layer of soft bamboo creating a striking contrast. Bamboo is the fastest growing plant on the planet; it grows up to a metre a day making it a highly renewable and sustainable material while being 100% biodegradable. All of our bamboo products do not contain any nails, screws or plastics and are entirely handmade by skilled craftspeople in the Chinese Province of Hunan.



Traditional

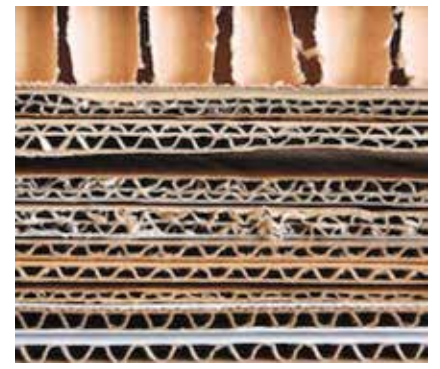
Round





# Cardboard

Our cardboard coffins are manufactured in the UK from corrugated cardboard materials produced from unbleached pulp containing a minimum of 80% recycled paper and wood pulp sourced from sustainable forests. They are 100% biodegradable and cremate with 90% lower carbon emissions than a standard chipboard coffin. The cardboard is folded in such a way that the structure is multi-layered and incredibly strong; they can support a weight of over 23 stone (146kg). Only natural, corn starch based glues are used in their construction. Our standard cardboard coffins will support a weight of 23 stone. Each comes with six natural cotton rope handles.



Manila



White



Woodgrain





# Picture Cardboard

Our Picture Cardboard coffins are manufactured in the UK from corrugated cardboard materials produced from unbleached pulp containing a minimum of 80% recycled paper plus wood pulp sourced from sustainable forests. The product is 100% biodegradable and they cremate with 90% lower carbon emissions than a standard chipboard coffin. Only natural, corn starch based glues are used in their construction and the picture finishes are not vinyl wraps but are printed directly onto the cardboard to maintain their environmentally friendly credentials. Our picture coffins give you the option of sharing some of your memories in images. If you cannot find the right model in our range, we can help you design a bespoke version by creating a personalised picture coffin with your selection of images. Natural cotton rope handles are also available (not pictured).



Spitfire



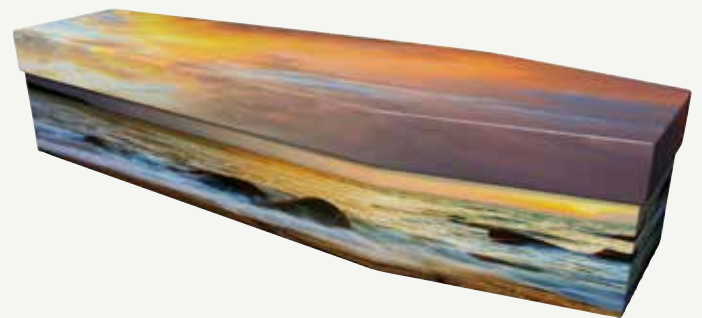
Bluebells



Poppy



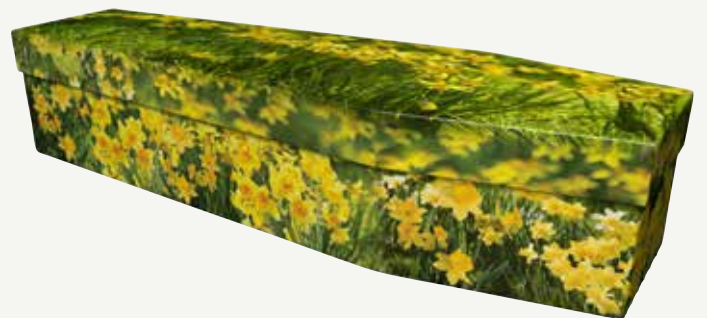
Seaside Sunset



Garden



Daffodils



Butterfly



Lily





# Scatter Tubes

Our scatter tubes make an ideal high quality and easy to use container for ashes until a final resting place has been chosen. No glue is required as each tube can be cleanly filled and completely sealed for storage of the ashes. At a later date, the ashes are easily accessible for scattering at a chosen spot. Alternatively, they can be kept as a much more environmentally friendly option to a standard metal or plastic urn. Made from recycled cardboard they are 100% bio-degradable and suitable for burial. Available in different styles each has a high quality finish designed to be as seamless as possible around the entire urn.



Dandelion



Autumn Forest



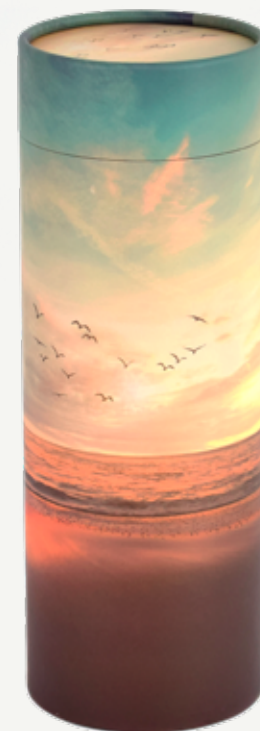
Sunset Dove



Poppy Field



Bluebell Wood



Tranquil Beach



# Shroud and Stretcher

Burial shrouds have been used for centuries made from materials such as wool, hemp, flax and even silk. Our shrouds are made from tightly woven, unbleached cotton yarn, a highly sustainable and renewable material. The willow stretcher is made with dark, barked willow which gives it a rustic, earthy appearance. 100% bio-degradable, the shroud and stretcher are ideal for natural burial but are also suitable for every type of funeral service including cremation.



Shroud



Willow Stretcher



Shroud &  
Stretcher



# Ashes Caskets

Our selection of beautiful Ashes Caskets are available in several different designs and materials which complement our range of coffins. Each handcrafted ashes casket comes complete with an interior double lined, drawstring cotton ashes bag. Most feature toggle fastened lids with the option of an engraved nameplate available. All are made from natural, highly sustainable materials and are 100% bio-degradable. Bespoke colour options are also available.



## Bamboo



Laurel



Aspen



Glade



Fern



Crocus



Bluebell

## Willow



Dahlia



Freesia



Peony

## Light Willow



Brown



Green



White

## English Willow



Allium



Iris



Tulip

## Pandanus



Buttercup



Primrose



Sunflower

## Banana



# Infant Caskets

Each of our infant caskets are handmade to the highest standards. Woven from 100% natural materials without the use of screws or glue, they are available in Banana, Pandanus, and either light or natural coloured willow. Bespoke options are available for a personalised touch. We are able to paint the caskets with water based, environmentally friendly paints if colours such as blue, pink or white are desired. Smaller versions of our willow Highsted and Cromer are also available. The Bamboo, Banana and Pandanus caskets are crafted in World Fair Trade Organisation Workshops. Our Willow caskets are produced in the EU.



*Natural willow*



*Light willow*



*Pandanus*



*Banana*

